

21st January 2019



Eastern Midland & Regional Assembly
3rd Floor
North, Ballymun Civic Centre
Main Street
Ballymun
Dublin
D09 C8P5

Re Public Consultation on Regional Spatial & Economic Strategy

Dear Sir or Madam

In 2018, Co Wicklow PPN consulted community groups across the 5 Municipal Districts of Co Wicklow, asking them "What is your vision for community wellbeing for this and future generations"? We asked them to consider this question under the following headings:

- Environment & Sustainability
- Health (physical & mental)
- Work, Economy, & Resources
- Social & Community Development
- Participation, Democracy & Good Governance
- Values, Culture & Meaning

The responses we received were documented and are available to download from our website: www.countywicklowppn.ie. We ran 11 workshops, 5 online consultations and accepted 2 submissions in total. The consultations facilitated the development of an overarching vision for each Municipal District along with community visions and high-level goals under each heading. The county vision was developed in the same way.

The vision and the national & regional strategic outcomes laid out in the Draft RSES and the key principals have many similarities with the Wicklow community's vision for our county.

Wise use of our resources, care for our environment, and enabling people to live healthy and sustainable lives was predominantly heard across the county with a plea that all planning decisions and development would support sustainability and liveability. Connectivity came across as vitally important, with a vision that transport and infrastructure would support access to education, employment and services that communities need to be healthy and to thrive.

We are submitting the visions for each Municipal District and the county in the hope that they will be considered and included in the final regional strategy, which we look forward to receiving.

Yours sincerely

Helen Howes

Helen Howes, Resource Worker
On behalf of Co Wicklow PPN

c/o CEART, Crinion Park, Wicklow Town, Co. Wicklow.

Email: countywicklowppn@gmail.com Web: www.countywicklowppn.ie Phone : 087 189 5145

Arklow M.D.

Vision - “All statutory, business and community stakeholders work together to preserve, protect, maintain and promote our natural and built environment”.

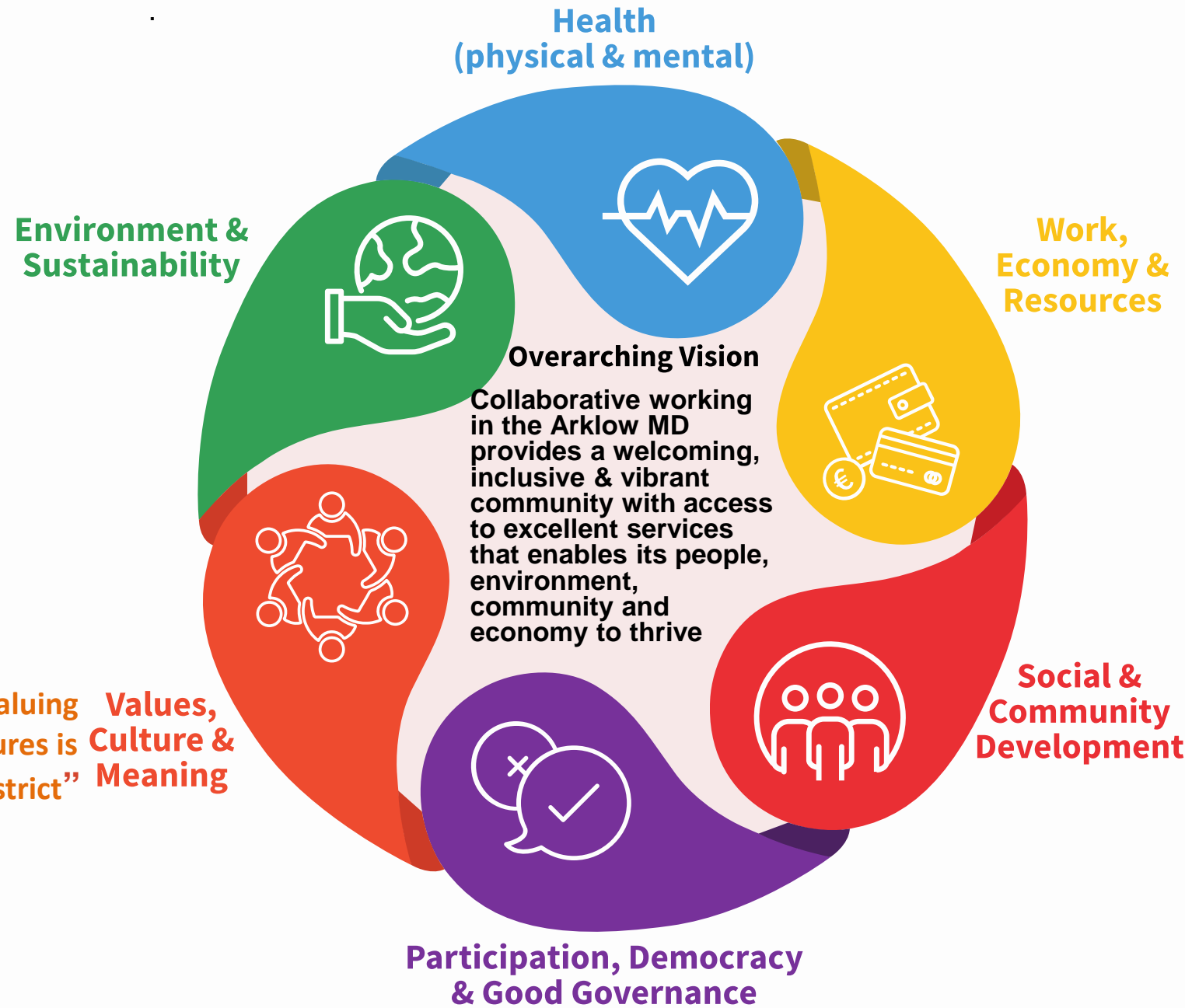
- Infrastructure and resources support sustainable living.
- Research, consultation and education supports citizens and communities to protect the environment for future generations
- All citizens appreciate and are connected to the natural environment.

Vision - “Welcoming, including and valuing all citizens, and celebrating diverse cultures is at the heart of the Arklow Municipal District”

- Our Irish culture, language, arts, and traditions are vibrant, and promoted for future generations, visitors and new communities
- Supports, information and resources facilitate all citizens to connect and engage in their community
- The culture and voice of all citizens and communities is welcomed, heard, and valued
- All citizens and communities are encouraged to share their culture and use their voice

Vision - “The Arklow Municipal District is a caring community where all citizens enjoy a coordinated, locally available and timely health service”

- Our natural & built environment promotes good physical and mental health
- Well-resourced statutory and community health services are easily accessible and meet the needs of all citizens
- Extensive and coordinated information, education and early intervention initiatives promote good physical and mental health



Vision - “All elements of government are collaborating and delivering for the community”.

- Local Government is participative, inclusive, and responsive to the needs of the community
- Planning & decision making is locally focused, transparent and engages meaningfully with the local community.
- Grass roots development is supported, resourced and uninhibited by bureaucracy.
- All statutory and community stakeholders are collaborating and ensuring that the voice of the more marginalised is heard.

Vision - “A vibrant local economy supports all citizens to live well and thrive”

- All citizen and economic activity is enabled by good transport and infrastructure systems underpinned by consultative planning.
- Training, employment and social supports enable all citizens to lead dignified lives
- Local skills, industry, natural and human resources are nurtured to achieve their full economic potential
- Excellent facilities and infrastructure supports innovative local economic activity

Vision - “All citizens are valued equally and enabled to live life to their full potential”

- Efficient information provision enables easy access to statutory, and community services
- Statutory, private and community services and facilities are collaborating, coordinated and easily accessible.
- The needs, safety & security of all citizens, particularly the more marginalised are met.
- Arklow MD has a vibrant, well-resourced community and voluntary sector

Baltinglass MD

Vision - “The natural environment of the Baltinglass MD is accessible, appreciated, protected and cared for”.

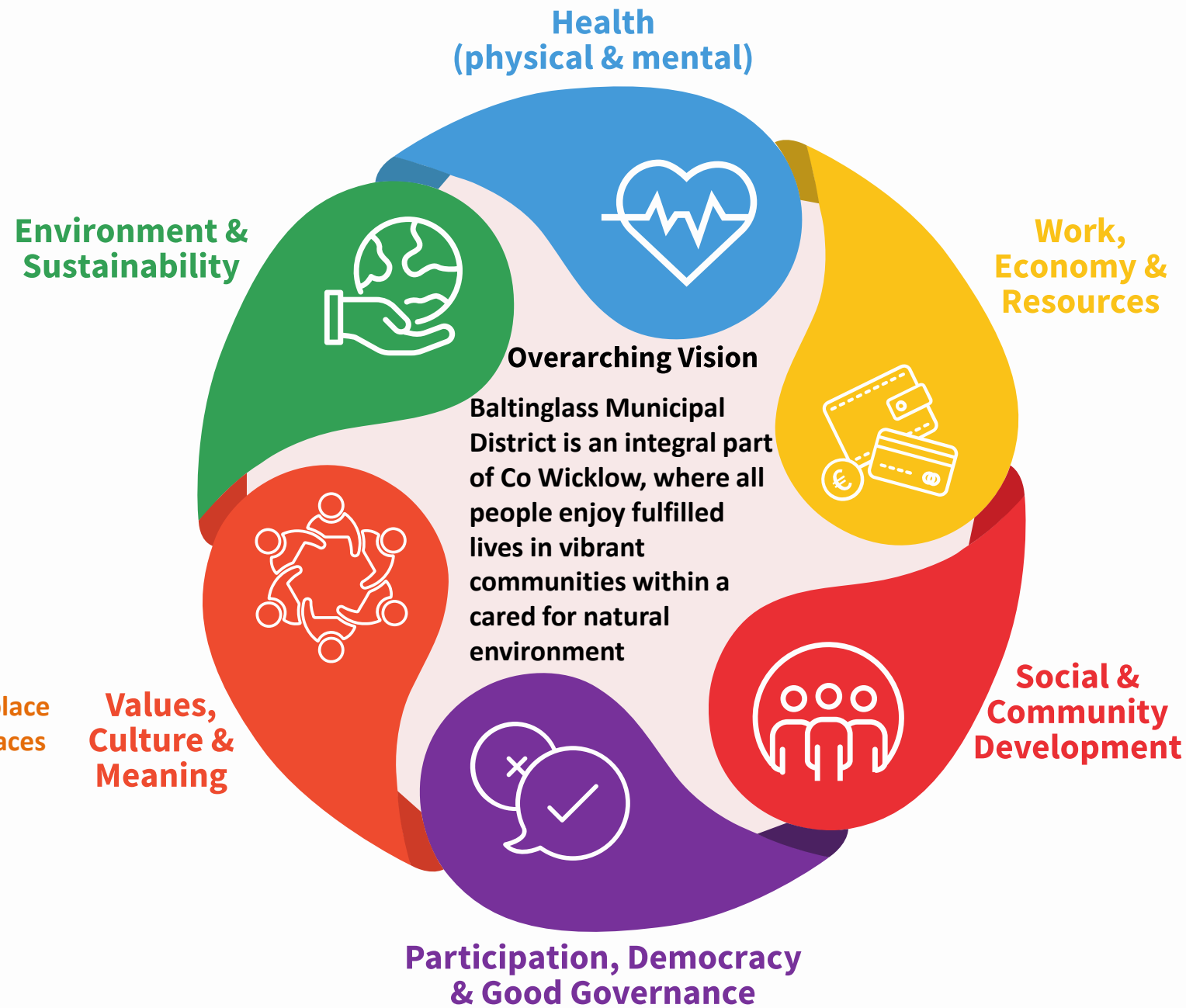
- The natural environment, including our mountains, water and landscape, and the heritage of Baltinglass MD is protected
- Community awareness and appreciation of the natural environment and heritage is encouraged
- Access to heritage and the natural environment is increased
- People live more sustainably
- Planning supports sustainability and liveability

Vision - “Baltinglass MD is a welcoming place that values its culture and heritage and embraces that of others”

- Music sport, recreation and other aspects of cultural activities that nurture our wellbeing are facilitated
- Volunteering is supported and valued
- All people are supported and included
- Our culture, traditions and heritage are preserved and promoted for future generations

Vision - “Baltinglass MD is a community where everyone has a good level of physical and mental health and where people look out for each other.”

- The local, social and natural environment facilitates good health
- All citizens of the Baltinglass MD have access to adequate statutory health services
- Community groups are resourced and encouraged to promote healthy initiatives.



Vision - “Co Wicklow’s governance structures and services are inclusive and supportive of all citizens of the Baltinglass MD”.

- Local government and community services are easily accessible and engage meaningfully with the people of the Baltinglass MD
- Local government fulfils its commitments and is transparent in its actions
- Community groups are valued and enabled to provide community services without their work being threatened by bureaucracy.
- Active citizenship is supported and encouraged

Vision - “Wise use of resources, good infrastructure and adequate services enable sustainable development, employment and education opportunities, while also addressing isolation and disadvantage”

- People and businesses are well connected physically, electronically and socially
- The economy supports access to adequate food, housing and opportunities for all.
- People, groups and enterprises are supported to create flexible job opportunities and have access to them.
- Bureaucracy does not impede local enterprise

Vision - “The people of Baltinglass MD have access to the services, social and physical infrastructure and support required to have a vibrant, inclusive and connected community”

- The people of Baltinglass MD have a sense of belonging to a place that matters to people
- Local organisations are supported to connect with each other and work together successfully
- All people are able to develop the relationships and have access to the resources required to participate in their community
- The community is supported to make best use of the assets and natural resources that exist within Baltinglass MD
- The council and community work together.

Bray MD

Vision - “Sustaining our environment is built into every other aspect of Community Wellbeing”.

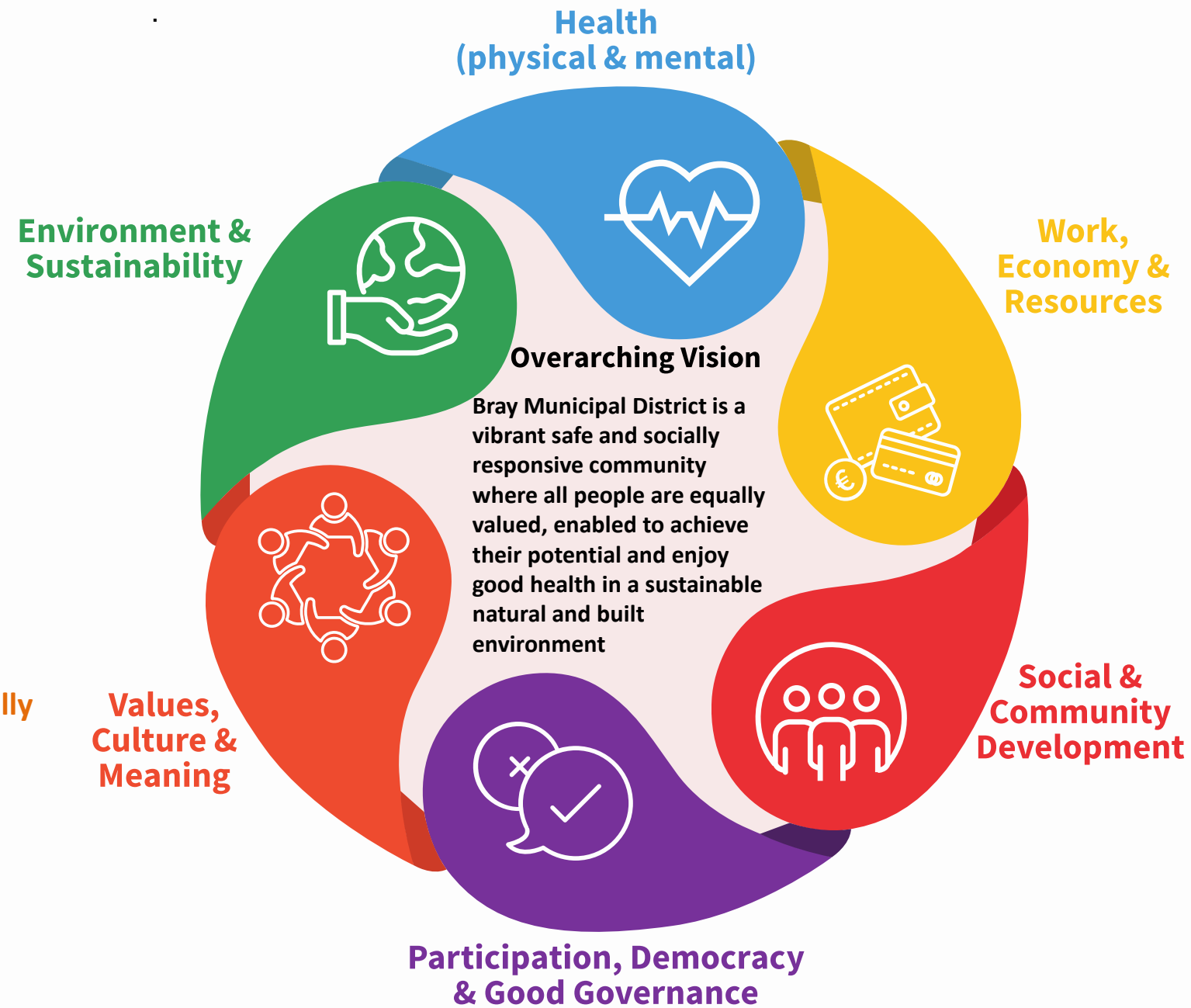
- The community is aware, emotionally connected and actively involved in the stewardship of the natural and built environment.
- People are supported to live sustainably
- Planning supports sustainability and liveability
- The local and natural environment supports healthy communities.

Vision - “All citizens are valued, equally included, and diversity is embraced”

- Our Irish culture is preserved and promoted.
- The impact of diversity in enriching our community is recognised, valued and supported
- Community infrastructure and services support and facilitate the diverse needs of all citizens.

Vision - “The Bray MD meets the health needs of all its citizens.”

- Statutory and Community Health services are accessible, well-resourced and coordinated.
- The built and natural infrastructure facilitates good health and resilient communities.
- The Bray MD is a community that cares for each other and looks after its more vulnerable members.



Vision - “Local Government and other key services are accessible and responsive to all citizens of the Bray MD”.

- The voice of the community is valued and supported in local decision making.
- Community Development is encouraged and enabled without restriction from bureaucracy.
- Local Government is transparent and accountable and facilitates meaningful participation.
- Information is free flowing and accessible.

Vision - “Bray MD is a vibrant, safe and environmentally sensitive place for business and people to thrive”

- All citizens are enabled to have a meaningful role in the local economy
- Bray MD has an excellent transport infrastructure that enhances the local economy
- Bray has a unique selling point that stimulates local and visitor business and tourism activity
- Bray MD is attractive and supportive of business.

Vision - “Bray is a safe, inclusive, nurturing community that promotes the potential of all its citizens.”

- Bray has excellent, well resourced, accessible social, statutory and community services and facilities available for all its citizens.
- Bray MD promotes the empowerment of all members of the community.
- Bray MD values and supports the will, commitment and input of the community sector.

Greystones MD

Vision - “All citizens of Greystones MD are actively conserving and protecting the environment and living more sustainably”.

- Knowledge and appreciation of the natural and built environment is cultivated
- All planning decisions and developments are environmentally sensitive.
- Excellent accessible recreational facilities promote a healthy lifestyle
- All citizens are socially connected within a safe and secure community

Vision - “Greystones MD is a welcoming and caring community that values its environment and the heritage and culture of all its citizens”

- An inclusive society that values, promotes and celebrates our native culture and other cultures in our diverse community.
- Well-resourced community infrastructure and services support and facilitate the diverse needs of all citizens.
- Information is available to support people to participate in their community and to access community and statutory services.
- All citizens feel safe and secure in their community.

Vision - “The basic needs of all citizens are met and everyone enjoys good physical and mental health”

- Statutory and community health services are co-ordinated, well-resourced and easily accessible for all citizens
- Good transport and infrastructure support optimal health benefits
- The natural environment is protected and enabled to contribute to the health of all citizens.
- People are connected and enjoy a good level of social and community supports
- Health information is an integral part of all community and statutory services.



Vision - “All citizens actively participate in local development and decision making”.

- Community Wellbeing is recognised as a crucial part of local development
- Clear accessible Information and procedures support community participation and activation.
- The Community Sector is supported and well-resourced

Vision - “Holistic Planning and development practices supports the needs of all citizens and promotes a unique identity for the Greystones MD”

- Environmentally sensitive practices and good use of resources is valued by the statutory, business and community sectors.
- Information provision, technology and transport enables all members of the community to reach their potential
- Excellent Facilities support business, social and community development

Vision - “The Greystones MD is an inclusive, caring and supportive community”

- Statutory and community services meet the diverse needs of the community, particularly the more vulnerable citizens
- Local infrastructure is inclusive and accessible and meets the needs of the whole community
- Excellent Social structures are resourced to support an inclusive caring community.
- All citizens are enabled to actively engage in the development of their community.

Wicklow MD

Vision - “Every policy, plan and decision of every organisation in the statutory, private and community sector is environmentally proofed.”

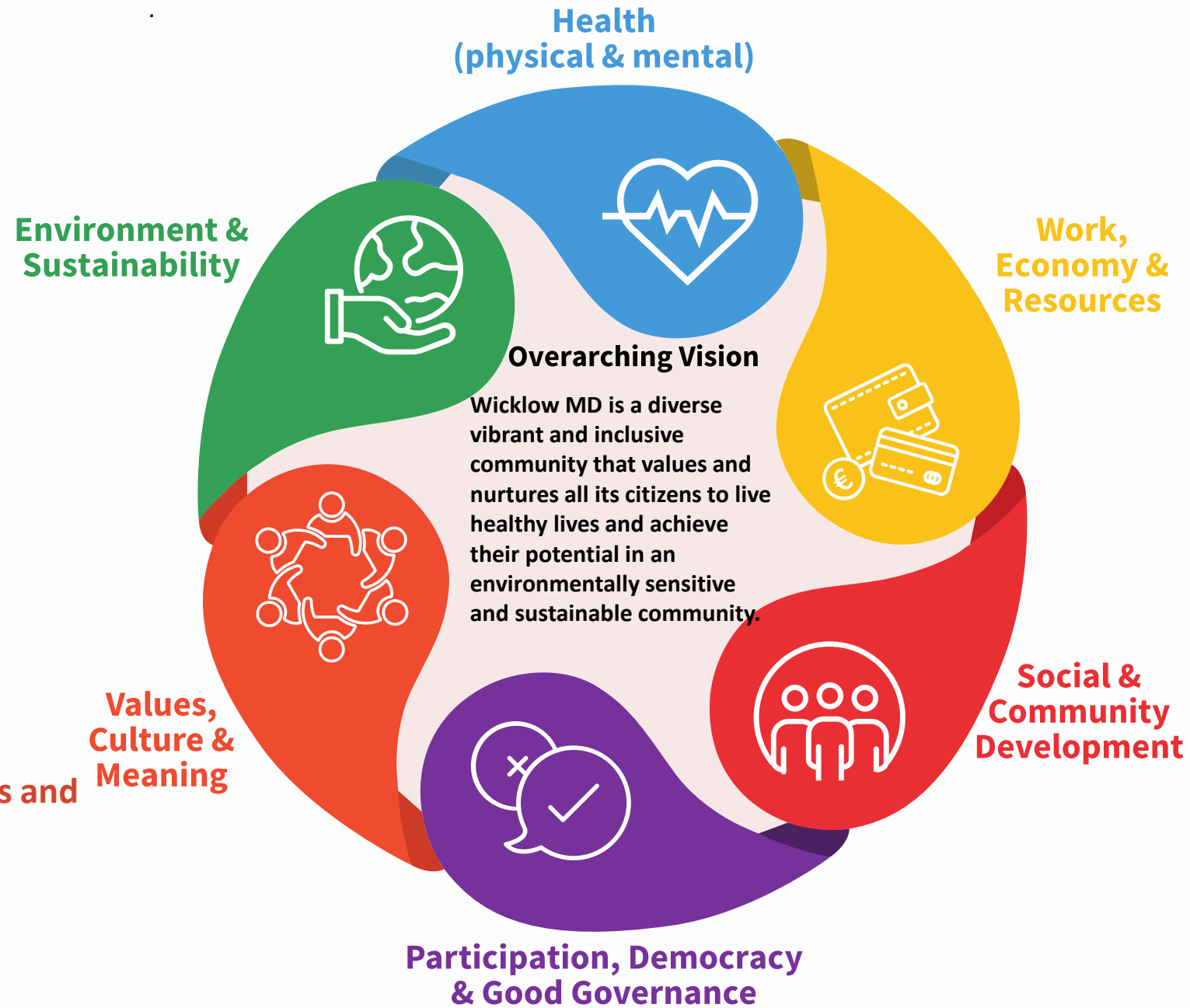
- A vibrant, environmentally sensitive, local economy supports sustainable living.
- All stakeholders in the Municipal District are working together to nurture and protect the natural and built environment.
- All citizens are connected with and appreciate the local natural environment.

Vision - “Wicklow MD respects difference, celebrates diversity and values the uniqueness of individuals and communities”

- People understand the importance of our natural environment and appreciate it.
- Our Irish culture, traditions and heritage are valued, celebrated and kept alive for future generations.
- Communities are enabled to play an active part in the preservation and protection of our heritage and culture.

Vision - “All people of the Wicklow MD are resilient, active and enjoy good physical and mental health”

- Statutory, industry and community sectors coordinate services to support the good health of the community.
- The natural environment is protected and enabled to contribute to the health of all citizens.
- Statutory and Community health and social services and supports are well resourced and readily accessible to all citizens.



Vision - “Transparent and accountable local government structures and procedures allows all citizens to contribute to the development of the Wicklow MD”.

- Community Groups are encouraged and supported without restriction from bureaucracy
- Participation, democracy and good governance is understood and facilitated for the benefit of all communities.
- Local information and services meet local needs

Vision - “The Wicklow MD cultivates a vibrant local economy”

- Statutory, business and community work together to enable people to reach their full potential
- People and business are well connected physically and electronically.
- Local enterprise and tourism initiatives are supported to reach their full economic potential.

Vision - “All citizens are equally valued, included and nurtured”

- Statutory, business and community services work together for the benefit of all citizens
- The commitment of the community and voluntary sector is recognised, supported and resourced
- The diversity of cultures in our community is acknowledged and celebrated.
- All citizens are engaged and active in their local community

County Wicklow

Vision - “Our wise use of resources, and our care and connection with our environment enables all citizens to live healthy and sustainable lives.”

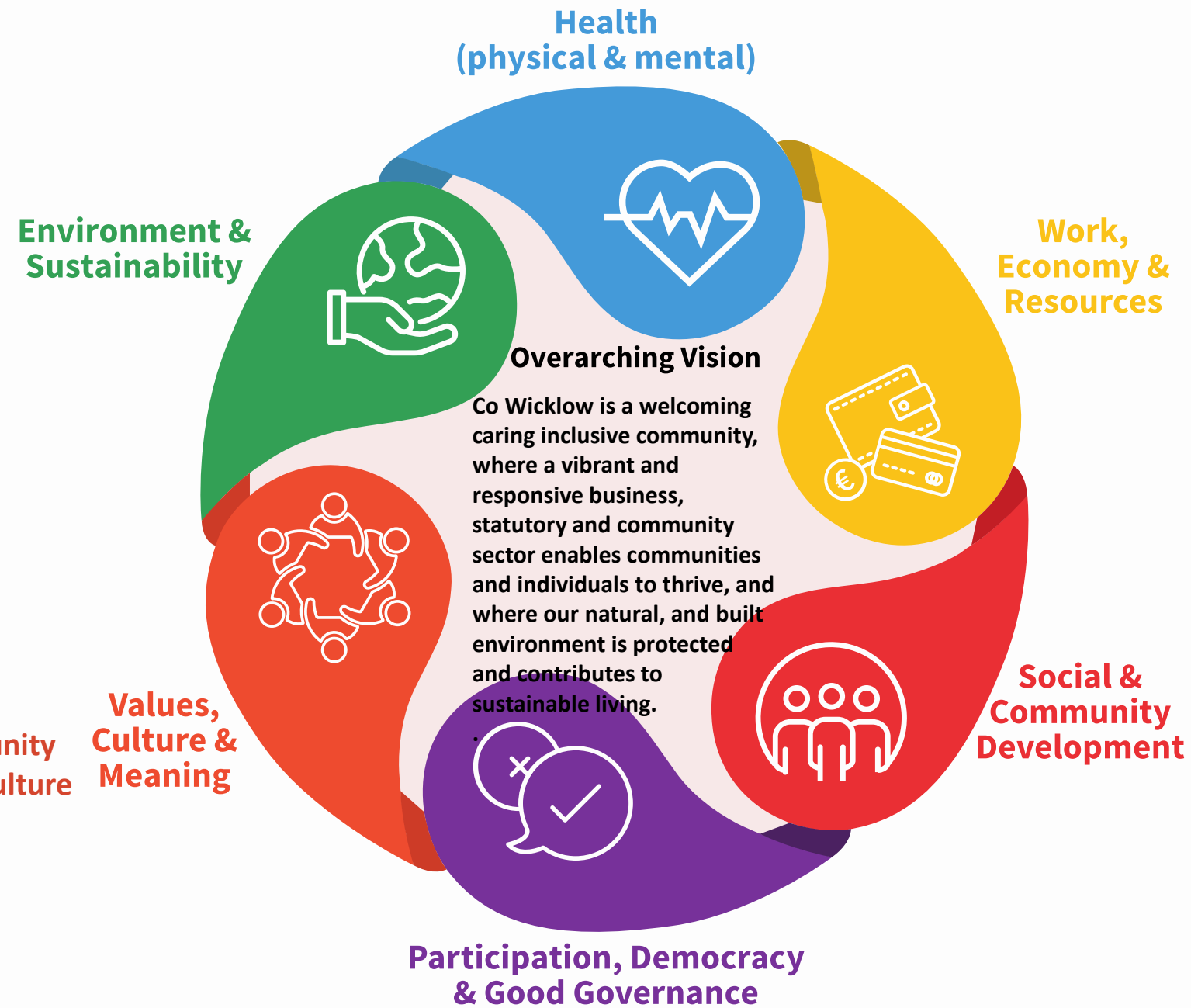
- All planning decisions and development support sustainability and liveability
- A cared for and accessible natural environment supports healthy communities
- All citizens have an awareness, appreciation and a strong connection to the natural environment and work together to protect it.

Vision - “Co Wicklow is a modern welcoming, caring and inclusive community that values the environment, and the culture and heritage of its diverse citizens.”

- We preserve our culture, traditions and heritage for future generations
- The impact of diversity in enriching our community is recognized, valued and supported.
- Supports, information and resources enables volunteering and facilitates all citizens to connect, engage and participate in their community
- The importance of our natural environment is understood, recognised and appreciated.

Vision - “Co Wicklow is a caring community where everyone has a good level of physical and mental health”

- Accessible, coordinated and well-resourced statutory & community services & facilities support the good health of all citizens
- Our natural & built environment contributes to the good health of the community
- The health related needs of all and especially our more vulnerable citizens are met.
- Extensive and coordinated information, education and early intervention initiatives promote good physical and mental health



Vision - “Transparent and accountable local governance structures and procedures allows all citizens to contribute to the development of a county that responds to their needs.”

- All statutory and community stakeholders are collaborating and ensuring that the voice of all people, and especially the more marginalised is heard
- Grass roots development is encouraged, supported, resourced and uninhibited by bureaucracy.
- Local government is participative, inclusive, accessible and responsive to the needs of the community

Vision - “Our vibrant local economy supports all our citizens to live well and thrive”

- The statutory, business and community sectors recognise and value the skills of all citizens and enable them to contribute meaningfully in the local economy
- People, businesses, facilities, and services are well connected physically, electronically and socially
- Enterprise activity within the county is sensitive to our environment and people and is enabled to achieve its full economic growth and potential

Vision - “Co Wicklow is an inclusive, caring and supportive community that nurtures all its citizens equally”

- Statutory, private and community services and facilities are well resourced, collaborating, coordinated and easily accessible to all.
- Diversity is recognised and valued, and everyone is included, engaged and active in their community.
- The contribution of volunteers and the community sector is recognised, valued and supported.
- The needs of our communities, particularly the more marginalised are met.